

# Treatment of Legionella and Other Pathogens

## You have detected *Legionella pneumophila* in your piping system. What do you do next?

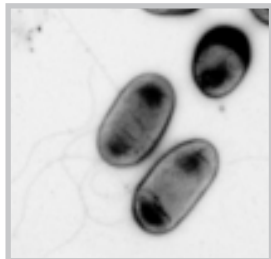
It is imperative that the limitations of each possible treatment technology are well understood before facility implementation. Failure to identify the most-appropriate technology for a particular facility could result in significant and unnecessary cost expenditures.

### Alliance Can Help

F.W. Webb's Alliance Environmental Group (AEG) can help you select the most efficacious and cost-effective approach for Legionella treatment, control, and mitigation. Our engineers and scientists can also assist with permitting and technology implementation. As a member of the F.W. Webb enterprise, AEG can tap a wealth of additional resources as needed. F.W. Webb has in-depth expertise in plumbing, heating, HVAC/R, PVF (pipe, valves, fittings), process controls, water works, pumps, high purity processes, gas products, building controls, and fire protection.

### Questions to Consider

- Do we need disinfection? What type? Chlorine? Monochloramine? Chlorine dioxide?
- Should we try UV light? Maybe copper-silver ionization, ozone or even thermal eradication?
- Should we combine applications?
- What are the latest technological developments from Europe and Asia?
- What are the pros and cons of each technology? What are the long-term costs for each technology?



**Alliance Environmental Group** provides a wide range of environmental testing, remediation, and consultative services. Engineering and scientific experts from Alliance work closely with federal, municipal, institutional, industrial, and commercial customers. Our comprehensive list of professional services covers all your environmental needs, including site assessments; hazardous materials management; regulatory compliance, permitting, and auditing; and much more. Helping clients since 2001, Alliance Environmental Group joined the F.W. Webb Company in 2016. We are committed to addressing your needs cost-effectively and efficiently.

*Dedicated to Responsive and Resourceful Solutions*

100 Jefferson Blvd., Suite 220  
Warwick, RI 02888  
401-732-7600 x 302

Headquartered in RI with  
locations in eight other states:  
CT, NH, NJ, NY, MA, ME, PA, and VT.