

# Hospitality Industry

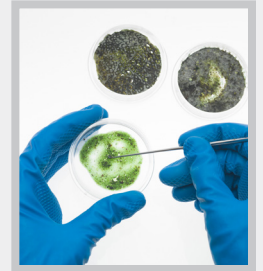
Image is everything in the hospitality business. You only get one shot at imparting a positive first impression with your guests. Guarding your brand and reputation are essential. The professionals at **Alliance Environmental Group (AEG)**, an F.W. Webb Company, understand your unique customer service position and the impact environmental and sustainability issues can have on repeat business, word of mouth, and public image.

Our associates are highly trained scientists and engineers who can handle your regulatory requirements, permitting, remediation, and other pressing and sensitive environmental needs.



## Hospitality Services:

- Energy audits / recommendations
- LEED (Leadership in Energy and Environmental Design) certification program
- Mold testing and abatement
- Indoor air testing and quality improvement
- Land-use planning
- Offsetting negative aesthetic and ecological impacts (e.g., algal blooms)
- Hazardous materials management
- Asbestos, lead paint, and polychlorinated biphenyls (PCBs) surveys and remediation
- Health and safety training and auditing
- Facility compliance auditing and regulatory reporting
- Food hygiene training / Laboratory testing services to manage food-poisoning risk



**Alliance Environmental Group** provides a wide range of environmental testing, remediation and engineering consulting services. Engineering and scientific experts from Alliance work closely with federal, municipal, institutional, industrial and commercial customers. Our comprehensive list of professional services covers all your environmental and engineering needs. This includes assessments, facility management, regulatory compliance, permitting, auditing and more. Helping clients since 2001, Alliance Environmental Group joined the F.W. Webb Company in 2016. Alliance is committed to addressing your needs efficiently and cost-effectively.

*Dedicated to Responsive and Resourceful Solutions*

832 Dyer Avenue  
Cranston, RI 02920  
401-732-7600

Headquartered in RI with  
locations in eight other states:  
CT, NH, NJ, NY, MA, ME, PA, and VT.